



*Products for Cleanrooms
and Controlled Environments*

 **CONTEC**[®]
Mission-critical cleaning and contamination control

www.contecinc.com



KEY

Look for these special symbols throughout our catalog:



These products are available as unique HexaWipe® wipes from Contec. See page 5 for more information.



These products are available presaturated with various blends of Isopropyl Alcohol and Deionized Water or other solvents. Your Contec representative will be able to help you determine which presaturated wipe is best for your application.



These Contec wipes and cleaning products are available Validated Sterile per AAMI Guidelines. All Contec sterile products are sterilized by Cobalt -60 Gamma Radiation and validated to a Sterility Assurance Level (SAL) of 10^{-6} in accordance with standards and recommended practices of the AAMI/ISO 11137:2006 Guidelines. Our sterile wipes are packaged to minimize wipe waste. Visit our website, www.contecinc.com to view more sterile cleaning products.

TABLE OF CONTENTS

Wipes

ISO Class 3-4	4
<i>Presaturated Wipes</i>	4
<i>Sterile Wipes</i>	4
ISO Class 5	8
<i>Presaturated Wipes</i>	8
<i>Sterile Wipes</i>	8
ISO Class 6-8	14
<i>Presaturated Wipes</i>	14
<i>Sterile Wipes</i>	15
General Purpose	19
Swabs	20
Disinfectants	23
Mopping Systems	24
Index	25

Contact Us

Contec, Inc.

525 Locust Grove
Spartanburg, SC 29303 USA
Tel: +1 (864) 503-8333
Fax: +1 (864) 503-8444
Toll Free: 1-800-289-5762
e-mail: wipers@contecinc.com
www.contecinc.com

Sales & Customer Service

North America
Tel: +1-864-699-8252
Toll Free: 1-866-855-4721

Europe
Tel: +1-864-699-8257

South America
Tel: +1-864-699-8257

Asia
Tel: 86-512-6274 4050
e-mail: asia@contecinc.com

Contec®

Mission-critical cleaning and contamination control

About Contec, Inc.

Contec, Inc., an ISO 9001:2008 registered company, is a leading manufacturer of contamination control products for critical manufacturing environments world-wide. Contec products are used in various industries across the globe—biomedical, pharmaceutical, medical device, microelectronics, optics, semiconductor, data storage, automotive OEM, and aerospace.

Our extensive product line for cleanrooms includes knitted, woven and nonwoven wipes, presaturated wipes, sterile and non-sterile wipes, mopping systems, wall washing systems, disinfectants, sponges, and swabs. Our ISO registration ensures customers of consistent quality products—from development to delivery. We are committed to meeting customer requirements and exceeding customer expectations.

Global Reach

Contec owns and operates manufacturing facilities in Spartanburg, South Carolina and Suzhou, China and has distribution centers in Toledo, OH and Europe. Both manufacturing facilities are certified to ISO 9001:2008. Contec has a team of technical specialists and sales representatives in North America, Europe, and Asia. These facilities and dedicated team members give Contec the ability to provide products and technical support to multinational customers with global needs.

Our Mission

Contec is dedicated to being the leader in developing and manufacturing innovative cleaning products for use in critical environments. Contec is a company where talented people are challenged and excited by the prospect of providing total customer satisfaction to world-class manufacturers.

Manufacturing & Technical Support

Our flexible manufacturing environment allows us to manufacture products to your specific requirements. Products can vary by fabric selection, wipe size, wipe shape, solvent choice, and saturation levels. Many packaging configurations are also available. All cleaning and spill control products were initially developed for a specific customer's need. If you have a unique cleaning challenge, let us know. Our sales and technical support team is fully trained to assist our customers in creating the product that best meets their needs.

Contec Quality

As a world-class provider of cleanroom products, Contec is committed to providing customer satisfaction. We measure product quality in the following terms: functionality, consistency, and traceability. To do this, we establish customer/vendor/employee partnerships focused on long-term results and benefits. As a result, Contec products are rapidly becoming the standard for cleanroom industries. Contec works to ensure quality in our finished products through rigorous design and control of our manufacturing process. Many of our manufacturing operations are proprietary systems designed by Contec; all are state-of-the-art. Continuous internal testing and annual ISO audits ensure the quality of our processes and products.



Cleanroom Wipes



Contec offers a full line of both dry and presaturated nonwoven and knitted cleanroom wipes for all of your critical cleaning needs.

Many products are offered Validated Sterile.

For part numbers, packaging information and technical data, please visit our web site: www.contecinc.com.



Not all cleanroom laundry processes are created alike: Contec has 20 years of experience in laundry processing of knitted wipes. Through years of continuous improvement, we have created processes that minimize Non-Volatile Residues (NVR's) and particles yet leave the wipe sorbent enough to have good functionality.

Contec has created the widest selection of knitted wipes using a variety of fabric types, edge technologies, and processing options. By changing these options to meet different cleaning and wiping requirements, Contec has engineered a family of products to meet the needs of many different industries. Our wipes are laundered and packaged in our Class 4 cleanroom laundry. Each product is double-packaged to insure product integrity.

With the introduction of PROSAT® PS-911 in 1992, Contec pioneered the use of presaturated wipes for industrial use.

More than twenty years of industry-leading innovation based on listening to our customers' needs, has resulted in the wide variety of presaturated wiping products Contec offers today — for many diverse industries and for almost any application. Contec continues to lead, with the largest selection of standard presaturated wipes available, as well as custom capabilities to meet the most demanding requirements.

Presaturated wipes provide many benefits, whether manufacturing integrated circuits, pharmaceutical drugs, medical devices, automobiles, or airplanes. Significant improvements in both production

process and safety are usually realized simply by using presaturated wipes instead of more traditional methods of hand wiping surfaces. For a list of the benefits of presaturated wipes, see our chart on page 8.

Contec's PROSAT presaturated cleanroom wipes are made from nonwoven and knitted material. Choose from polyester, meltblown polypropylene and polyester/cellulose blends, saturated with isopropyl alcohol or ethyl alcohol and deionized water. SATWipes® presaturated wipes are available in nonwoven polyester, polyester/cellulose, rayon or polyester/rayon.

For critical pharmaceutical and biotech applications, sterile wipes are often a better option for cleaning and spill control. In these applications, packages with smaller put-ups are essential so that there is not excessive waste of wipes. Contec offers a variety of packaging options in several of our knitted polyester wipe styles.

Contec's sterile wipes and mopping products are validated sterile to a Sterility Assurance Level (SAL) of 10^{-6} in accordance with standards and recommended practices of AAMI (Association for the Advancement of Medical Instrumentation) Guidelines. This means there is less than a one in one million probability that the product contains a microorganism. Validation reports are available upon request. Certificates of Sterility are included with each shipment of Validated Sterile product.

Sterility validation requires extensive testing and more documentation than irradiated products. A product can be irradiated but not validated sterile. Contec irradiated products have been irradiated with a minimum dose of 25kGy. For more critical applications, consider Contec's line of Validated Sterile products.

Recommended Cleanroom Wipes

STERILE PRESATURATED WIPES

PROSAT® Sterile™ PS-7030IR Sterile nonwoven polyester wipes presaturated with 70% IPA/30% DI Water blend; 9 x 9" (22.9 x 22.9 cm)

PROSAT® Sterile™ PS-911EB Sterile polypropylene wipes presaturated with 70% IPA/30% DI Water blend; 9 x 11" (22.9 x 27.9 cm)

PROSAT® Sterile™ PS-911EB/ETOH Sterile polypropylene wipes presaturated with 70% denatured ethyl alcohol/30% DI Water blend; 9 x 11" (22.9 x 27.9 cm)

PROSAT® Sterile™ PSC20001 Sterile nonwoven polyester/cellulose wipes presaturated with 70% IPA/30% DI Water blend; 9 x 11" (22.9 x 27.9 cm)

PROSAT® Sterile™ PSC20005 Sterile nonwoven polyester/cellulose wipes presaturated with 70% IPA/30% DI Water blend; 9 x 11" (22.9 x 27.9 cm)

PROSAT® Sterile™ PSPS0076 Sterile Polynit Heatseal, half-folded wipes presaturated with 70% IPA/30% DI Water blend; 9 x 9" (22.9 x 22.9 cm)

PROSAT® Sterile™ PSPS0091 Sterile polyester heat sealed wipes presaturated with 70% IPA/30% DI Water blend; 12 x 12" (30.5 x 30.5 cm)

STERILE KNITTED WIPES

Polynit Heatseal Sterile LWPS0006 Sterile textured 100% polyester interlock knit wipes with heat sealed edges, 9 x 9" (22.9 x 22.9 cm)

Polynit Heatseal Sterile LWPS0007 Sterile textured 100% polyester interlock knit wipes with heat sealed edges, 9 x 9" (22.9 x 22.9 cm)

Quiltec® I Sterile LWQS0001 Sterile heavyweight 2-ply quilted polyester wipes with heat sealed edges, 9 x 9" (22.9 x 22.9 cm)

KNITTED WIPES

Polywipe-C Heatseal PCHS-99 Lightweight 100% polyester interlock knit wipes with heat sealed edges; 9 x 9" (22.9 x 22.9 cm)

Polynit Heatseal PNHS-99 Textured 100% polyester interlock knit wipes with heat sealed edges; 9 x 9" (22.9 x 22.9 cm)

Quiltec® I QT1-99 Heavyweight 2-ply quilted polyester wipes with heat sealed edges; 9 x 9" (22.9 x 22.9 cm)

PRESATURATED WIPES

PROSAT® PS-911 Meltblown polypropylene wipes presaturated with 70% IPA/30% DI Water blend; 9 x 11" (22.9 x 27.9 cm)

PROSAT® PSC20002 Nonwoven cellulose/polyester wipes presaturated with 70% IPA/30% DI Water blend; 9 x 11" (22.9 x 27.9 cm), 24 wipes/pouch

PROSAT® PSC20006 Nonwoven cellulose/polyester wipes presaturated with 70% IPA/30% DI Water blend; 9 x 11" (22.9 x 27.9 cm), 50 wipes/pouch

PROSAT® Polynit Heatseal (PS-HS9-7030) Sealed-edge 100% knitted polyester wipes presaturated with 70% IPA/30% DI Water blend; 9 x 9" (22.9 x 22.9 cm), 30 wipes/pouch

PROSAT® Polywipe (PS-C-7030) Sealed-edge 100% knitted polyester wipes presaturated with 70% IPA/30% Water blend; 6 x 9" (15.2 x 22.9 cm)



Part numbers for many other cleanroom wipes are listed on the following pages and on our web site. For information on part numbers not listed, please contact your Contec sales representative or visit us on the web at

www.contecinc.com.





PROSAT® CLEANROOM WIPES

PROSAT presaturated cleanroom wipes from Contec are created to your specific requirements. Variables include fabric selection, solvent blend, saturation level, and packaging. Resealable pouches preserve cleanliness and reduce solvent evaporation. Our refillable Satbox container made of durable plastic with gasket seal offers further protection from evaporation or contaminants. The PROSAT knitted wipes pouch and Satbox container are conveniently sized to fit comfortably on cleanroom work benches and lab tables. Your Contec sales representative will help you determine which PROSAT wipe is best for your application.

Fabric selections for PROSAT® Wipes include:

- Polywipe-C
- Polywipe-C Heatseal
- Polynit
- Polynit Heatseal
- Quiltec® I
- Poly/Cellulose Nonwoven
- 100% Polyester Nonwoven
- Meltblown Polypropylene

PROSAT®

Presaturated knitted polyester wipes

- Made with standard weight knitted polyester Polynit or Polynit Heatseal material. Also available with lightweight Polywipe-C fabric.
- Soft, non-abrasive textured wipe cleans without scratching
- Low in both particles and extractables
- Abrasion and chemical resistant
- Laundered and packaged in Contec's ISO Class 4 cleanroom
- Resealable pouch preserves cleanliness and saturation levels. Refillable plastic box is also available.
- Each package is individually lot-numbered
- Ideal for cleanroom, surface preparation and critical manufacturing processes

Up to
50%
Reduction
in VOCs!



Part #	Description	Wipes/ Pouch	Pouches/ Case
PS-C-7030	6" x 9" (15.2 cm x 22.9 cm) PROSAT w/Polywipe-C, 70% IPA/30% DI Water	30	30
PS-HS-7030	6" x 9" (15.2 cm x 22.9 cm) PROSAT w/ Polynit Heatseal, 70% IPA/30% DI Water	30	30
PS-HS9-7030	9" x 9" (22.9 cm x 22.9 cm) PROSAT w/ Polynit Heatseal, 70% IPA/30% DI Water	30	30
PSPS0047	12" x 12" (30.5 cm x 30.5 cm) PROSAT w/ Polynit, 70% IPA/ 30% DI Water	30	20

Sterile PROSAT®

Presaturated knitted polyester sterile cleanroom wipes




- ISO Class 4 Cleanroom laundered and packaged
- Validated sterile to 10⁻⁶ SAL per AAMI/ISO 11137:2006 Guidelines
- Single ply and laminated knits available
- Extremely low in particle and fiber generation
- Presaturated with 70% IPA/30% DI Water
- Small put-ups in easy to use peel and reseal pouches are ideal for sterile use and help keep wipe waste to a minimum
- Also available in QuickPick packaging
- Specifically designed for highly critical sterile environments
- For use in wiping and cleaning surfaces and equipment in sterile core areas



Part #	Description	Wipes/ Pouch	Pouches/ Case
PSPS0073	6" x 9" (15.2 cm x 22.9 cm) PROSAT w/Polynit Heatseal, sterile, 70% IPA/30% DI Water	30	20
PSPS0076	9" x 9" (22.9 cm x 22.9 cm) PROSAT w/ Polynit Heatseal, half-folded, sterile, 70% IPA/30% DI Water	20	40
PSPS0091	12" x 12" (30.5 cm x 30.5 cm) PROSAT w/ Polyester Heatseal, sterile, 70%IPA/30% DI Water	20	4
PSQS0001	12" x 12" (30.5 cm x 30.5 cm) PROSAT w/ Quiltec I, sterile, 70%IPA/30% DI Water	20	15
PSQS0005	10" x 11" (25.4 cm x 27.9 cm) PROSAT w/ Quiltec I, sterile, 70% IPA/ 30% DI Water	20	20

HexaWipe® Laser-cut hexagonal wipes

- Unique hexagonal shape enables operators to easily distinguish ISO Class 4 wipes from other wipes used in less critical areas of the same facility, reducing the chance of cross-contamination due to use of wrong wipe
- Provides optimal surface-to-edge ratio
- Decreases potential for edge contamination
- Easily folded with one hand
- Laser sealed edge
- Laundered and packaged in a ISO Class 4 cleanroom
- Throughout this catalog, items that are available as HexaWipe® wipes are indicated with this symbol: 



WHAT IS A HEXAWIPE®?

Contec engineers created the patent-pending HexaWipe wipe 13 years ago to enable operators to quickly distinguish ISO Class 4 wipes from others used in less critical areas of the same facility. Designed to be easily folded with one hand, the 6-sided HexaWipe is unique to Contec.

Available in your choice of our knitted polyester fabrics, in 9" (22.9 cm) and 12" (30.5 cm) sizes.

Part #	Description	Wipes/Bag	IB/OB	Bags/Case
LWCS0004	Polywipe-C Heatseal, 9" (22.9 cm), bulk	150	•	10
LWPS0003	Polynit Heatseal, 9" (22.9 cm), bulk	150	•	8
LWQT0003	Quiltec, 9" (22.9 cm), stacked	100	•	10
LWQT0005	Quiltec, 12" (30.5 cm), stacked	100	•	5
LWSZ0003	StatZorb, 9" (22.9 cm), stacked, ESD	150	•	12

Key: **IB** = Inner Bag **OB** = Outer Bag

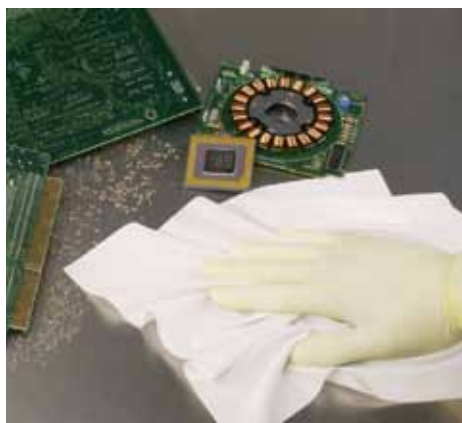


Polywipe-C Heatseal 100% polyester interlock knit wipe

- Soft textured wipe cleans surfaces without scratching
- Laser-cut, which seals fibers at wipe's edge and allows 100% utilization of wipe
- Laundered and packaged in a ISO Class 4 cleanroom
- Extremely low in both particles and fibers
- Good sorbency with solvents; chemical resistant
- Economical
- Available sterile

Applications

- Optimal for intricate cleaning applications where dexterity is critical



Part #	Description	Wipes/Bag	IB/OB	Bags/Case
PCHS-99	9" x 9" (22.9 cm x 22.9 cm) wipe	150	•	12
PCHS-1212	12" x 12" (30.5 cm x 30.5 cm) wipe	75	•	10
LWCS0028	16" x 20" (40.6 cm x 50.8 cm) wipe, bulk	50	•	5

Key: **IB** = Inner Bag **OB** = Outer Bag



Product Packaging

For convenience, Contec's laundered knit wipes are offered in a wide variety of standard sizes and packaging options. Cost-efficient bulk packaging is available for most Contec wipes.

Wipe Sizes:

- 4" x 4" (10.2 cm)
- 9" x 9" (22.9 cm)
- 12" x 12" (30.5 cm)
- 9" (22.9 cm) HexaWipe™
- 12" (30.5 cm) HexaWipe™

Packaging Configurations:

- Stacked
- Bulk



**QUICKPICK™
PACKAGING**



Contec's QuickPick Packaging features half-folded Polynit Heatseal polyester cleanroom wipes in a blue dispenser bag. Wipes are stacked so that the folded edge is easily accessible through the die-cut opening in the top of the package. Convenient and easy to use, QuickPick Packaging addresses both wipe waste and proper wiping technique, and also helps reduce risks of cross-contamination from gloves and dispenser boxes.



Polynit Heatseal
Textured 100% polyester no-run interlock knit

- Laser-cut, which seals fibers at wipe's edge and allows 100% utilization of wipe
- Laundered and packaged in a ISO Class 4 cleanroom
- Extremely low in particles, fibers and non-volatile residues (NVRs)
- Good sorbency with solvents
- Abrasion and chemical resistant
- Available in bulk, stacked or Contec's patent-pending QuickPick™ packaging
- Available in custom sizes and shapes
- Ideal for general purpose cleaning



Part #	Description	Wipes/Bag	IB/OB	Bags/Case
PNHS-44	4" x 4" (10.2 cm x 10.2 cm) wipe	300	•	16
PNHS-99	9" x 9" (22.9 cm x 22.9 cm) wipe	150	•	8
PNHS-99B	9" x 9" (22.9 cm x 22.9 cm) wipe, bulk	300	•	4
PNHS-99B/150	9" x 9" (22.9 cm x 22.9 cm) wipe, bulk	150	•	8
PNHS-99QP	9" x 9" (22.9 cm x 22.9 cm) wipe, QuickPick package	50	2	8
PNHS-1212	12" x 12" (30.5 cm x 30.5 cm) wipe	75	•	10
PNHS-1212B	12" x 12" (30.5 cm x 30.5 cm) wipe, bulk	75	•	10
LWPS0006	9" x 9" (22.9 cm x 22.9 cm) wipe, sterile	25	4	10
PN-99IR	9" x 9" (22.9 cm x 22.9 cm) wipe, sterile	10	10	10
LWPS0007	12" x 12" (30.5 cm x 30.5 cm) wipe, sterile			



Key: IB = Inner Bag OB = Outer Bag

Lamination and Sorbency

Lamination of two layers of fabric allows the final product to have more than twice the sorbent capacity of the two single-ply layers. Liquid spills are quickly absorbed and "locked" into pockets created by this "quilting" process.

Quiltec® I
2-ply quilted polyester wipe

- Most sorbent sealed edge wipe available
- 2-ply construction increases strength, durability and total sorbency
- Laundered and packaged in a ISO Class 4 cleanroom
- Extremely low in both particles and fibers
- Excellent sorbency with solvents
- Abrasion and chemical resistant

Applications

- General purpose cleaning and spill pick up
- Cleaning interior surfaces and equipment
- Product wipe down
- Disinfectant application



Part #	Description	Wipes/Bag	IB/OB	Bags/Case
QT1-99	9" x 9" (22.9 cm x 22.9 cm) wipe	100	•	10
QT1-99B	9" x 9" (22.9 cm x 22.9 cm) wipe, bulk	150	•	6
QT1-1212	12" x 12" (30.5 cm x 30.5 cm) wipe	100	•	5
QT1-1212B/100	12" x 12" (30.5 cm x 30.5 cm) wipe, bulk	100	•	5
LWQS0001	9" x 9" (22.9 cm x 22.9 cm) wipe	25	4	10
LWQS0002	12" x 12" (30.5 cm x 30.5 cm) wipe, sterile	25	4	5
LWQT0008	12" (30.5 cm) wipe, HexaWipe, sterile	25	4	5



Key: IB = Inner Bag OB = Outer Bag

Anticon® Wipes with Particle Attraction Technology (PAT)

Attracts and retains 30 times more particles*

Using a patented treatment that permanently bonds to the polyester fabric, Anticon wipes with Particle Attraction Technology attract and retain particles better than traditional cleanroom wipes. This performance is enhanced when combined with isopropanol and other solvents used in cleanroom cleaning.

- Anticon wipes with PAT exhibit minimal levels of particles, fibers, ions and extractables.
- Traps 35 times more particles than competitive wipes with out PAT, leaving surfaces cleaner.
- Retains 95% of the particles trapped, dramatically reducing the risk of recontamination.
- Attracts more contaminants such as iron, titanium dioxide, titanium, silicon, zinc, aluminum, tungsten, and copper, improving yields.
- Traps particles in solution better than competitive wipes, leaving surfaces cleaner.

*than competitive wipes



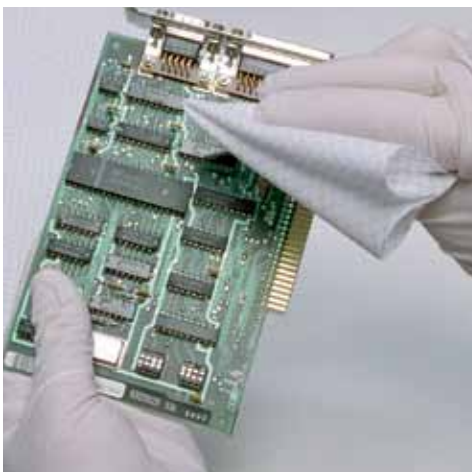
Part #	Description	Wipes/Bag	Bags/Case
493400-569	9" x 9" (23 cm x 23 cm) Anticon Gold HeavyWeight with PAT wipes, bulk	150	8
493300-549	9" x 9" (23 cm x 23 cm) Anticon Gold StandardWeight with PAT wipes, bulk	150	14
493300-545	12" x 12" (30.5 cm x 30.5 cm) Anticon Gold StandardWeight with PAT wipes, bulk	100	10
493200-526	6" x 6" (15 cm x 15 cm) Anticon White Magic with PAT wipes, bulk	300	18
493200-529	9" x 9" (23 cm x 23 cm) Anticon White Magic with PAT wipes, bulk	150	14
493200-538	12" x 12" (30.5 cm x 30.5 cm) Anticon White Magic with PAT wipes, bulk	100	10
493200-534	9" x 9" (23 cm x 23cm) Anticon White Magic with PAT wipes, 70% IPA/ 30% DI Water	50	16

StatZorb® Electrostatic dissipative wipe

- Polyester fabric with conductive fiber in specially designed grid pattern that minimizes "hot spots"
- Antistatic properties are uniform on both sides of the wipe
- Surface resistivity is 4.3×10^7 . Static decay time is less than 1.5 seconds
- Low in particles and extractables
- Abrasion and chemical resistant
- Thermally sealed edges

Applications

- Dry wiping of sensitive electronic components
- General cleaning in ESD sensitive areas
- Ideal for use in disk drive or MR head manufacturing



Part #	Description	Wipes/Bag	Bags/Case
SZ-99	9" x 9" (22.9 cm x 22.9 cm) wipe	150	12
SZ-1212	12" x 12" (30.5 cm x 30.5 cm) wipe	75	6
LWSZ0003	9" (22.9 cm) wipe, HexaWipe, stacked	150	12



Anticon® Gold HeavyWeight

100% polyester double-knit interlock wipe with sealed edges

- High sorptive capacity and fast adsorption rate for superior spill control
- High tensile strength to eliminate tearing and snagging in tough cleaning applications

Anticon® Gold StandardWeight

100% polyester double-knit interlock wipe with sealed edges

- High sorptive capacity and fast adsorption rate for superior spill control
- Lighter basis weight provides superior value for general cleaning applications
- Ideal for wiping down sensitive optics

Learn more about our complete line of Anticon wipes:
www.anticonwipers.com

Electrostatic Discharge

Electrostatic discharge is the transfer of an electrical charge between bodies at different electrical potentials. Surface resistivity is a measured physical property quantifying the material's ability to allow the flow of electrons across the surface. Conductive materials have a low electrical resistance ($< 1 \times 10^{12}$ ohm/sq), while insulative materials have a high electrical resistance ($> 1 \times 10^5$ ohm/sq). Static dissipative materials have an electrical resistance somewhere between conductive and insulative materials. Static decay time is directly related to the material's ability to conduct electrical charge. The lower a material's resistivity, the shorter the static decay time.



**BENEFITS of
Presaturated Wipes**

Presaturated wipes offer manufacturers many benefits. PROSAT® and SATWipes® wipes from Contec:

- Increase solvent control and accountability
- Increase worker and environmental safety
- Increase productivity
- Increase convenience
- Increase cost savings
- Reduce hazardous waste by up to 40%
- Reduce VOC emissions
- Reduce solvent storage issues

PROSAT®

Presaturated cleanroom wipes

Contec's **PROSAT Presaturated Wipes** feature polypropylene, polyester or polyester/cellulose nonwoven wipes presaturated with IPA and DI Water blends in flat re-sealable pouches individually lot-numbered for traceability. These specially designed pouches preserve cleanliness and solvent saturation levels. PROSAT wipes are an effective, efficient and convenient method of cleaning and wiping benches, hoods and equipment. PROSAT wipes are ideal for wiping articles prior to pass through.

PROSAT® Sterile™

Sterile presaturated cleanroom wipes

PROSAT Sterile Presaturated Wipes are designed for the biotech, pharmaceutical and medical device industries. Wipes are sterilized using Gamma radiation and are validated sterile to 10⁻⁶ per AAMI (Association for the Advancement of Medical Instrumentation) ISO 11137:2006 Guidelines. Certificates of Sterility are included with each product shipment and validation reports are available upon request. Re-sealable pouches with tamper-evident labels ensure product integrity and cleanliness. Designed for general cleaning in sterile environments, PROSAT Sterile wipes are ideal for cleaning equipment, wiping articles prior to pass through, and for cleanup after Rhodac plate sampling.



Part #	Description	Wipes/ Pouch	Pouches/ Box	Boxes/ Case	Pouches/ Case
PROSAT® Wipes					
PS-911	9" x 11" (22.9 cm x 27.9 cm), polypropylene wipe, 70% IPA/30% DI Water	30	•	•	50
PS-850	8" x 8" (20.3 cm x 20.3 cm) polypropylene wipe, 70% IPA/30% DI Water	50	•	•	50
PS-Si	9" x 9" (22.9 cm x 22.9 cm) nonwoven polyester wipe, 10% IPA/90% DI Water	30	•	•	50
PS-919	9" x 11" (22.9 cm x 27.9 cm) polypropylene wipe, 91% IPA/9% DI Water	30	•	•	50
PSC20002	9" x 11" (22.9 cm x 27.9 cm) polyester/cellulose wipe, 70% IPA/30% DI Water	24	•	•	50
PSC20006	9" x 11" (22.9 cm x 27.9 cm) polyester/cellulose wipe, 70% IPA/30% DI Water	50	•	•	28
PROSAT® Sterile™ Wipes					
PS-7030IR	9" x 9" (22.9 cm x 22.9 cm) nonwoven polyester wipe, sterile, 70% IPA/30% DI Water	20	10	4	40
PS-911EB	9" x 11" (22.9 cm x 27.9 cm) polypropylene wipe, sterile, 70% IPA/30% DI Water	30	12	4	48
PS-911EB/ETOH	9" x 11" (22.9 cm x 27.9 cm) polypropylene wipe, sterile, 70% denatured ethyl alcohol/30% DI Water	30	12	4	48
PSC20001	9" x 11" (22.9 cm x 27.9 cm) polyester/cellulose wipe, sterile, 70% IPA/30% DI Water	24	12	4	48
PSC20005	9" x 11" (22.9 cm x 27.9 cm) polyester/cellulose wipe, sterile, 70% IPA/30% DI Water	50	•	•	28

Key: **IB** = Inner Bag **OB** = Outer Bag



A New Look! Contec's PROSAT® and PROSAT® Sterile™ presaturated wipes have new improved label artwork and warning information. Contemporary design incorporates more product information than ever before, including a larger part number for quick, easy identification. Warning information appears on the back of each pouch in eleven languages, including English, French, German and Spanish.

Polywipe-C

Lightweight 100% polyester interlock knit wipe

- Soft, non-abrasive texture cleans surfaces without scratching
- Cost-effective upgrade from less critical wipes
- Laundered and packaged in a ISO Class 4 cleanroom
- Low in both particles and extractables
- Good sorbency with solvents
- Abrasion and chemical resistant
- Available sterile

Applications

- Ideal for cleaning interior surfaces of process tools and other equipment



Part #	Description	Wipes/Bag	IB/OB	Bags/Case
PC-66	6" x 6" (15.2 cm x 15.2 cm) wipe	300	•	14
PC-99	9" x 9" (22.9 cm x 22.9 cm) wipe	150	•	12
PC-99B/150	9" x 9" (22.9 cm x 22.9 cm) wipe	150	•	10
PC-99B	9" x 9" (22.9 cm x 22.9 cm) wipe, bulk	300	•	5
PC-1212	12" x 12" (30.5 cm x 30.5 cm) wipe	75	•	10

Key: **IB** = Inner Bag **OB** = Outer Bag



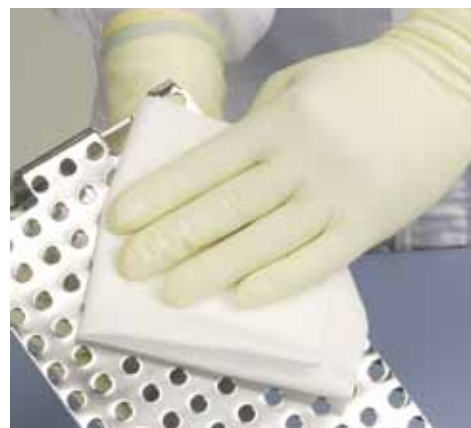
Polynit

100% textured polyester no-run interlock knit wipe

- Laundered and packaged in an ISO Class 4 cleanroom
- Low in both particles and extractables
- Good sorbency with solvents
- Abrasion and chemical resistant
- Available sterile

Applications

- Ideal for general purpose cleaning, wiping exterior surfaces of products, as well as cleaning process tools and other equipment



Part #	Description	Wipes/Bag	IB/OB	Bags/Case
PN-44	4" x 4" (10.2 cm x 10.2 cm) wipe	300	•	16
PN-44B	4" x 4" (10.2 cm x 10.2 cm) wipe, bulk	600	•	8
PN-99	9" x 9" (22.9 cm x 22.9 cm) wipe	150	•	8
PN-99B/150	9" x 9" (22.9 cm x 22.9 cm) wipe, bulk	150	•	8
PN-99 B	9" x 9" (22.9 cm x 22.9 cm) wipe, bulk	300	•	4
PN-1212	12" x 12" (30.5 cm x 30.5 cm) wipe	75	•	10
PN-1212B	12" x 12" (30.5 cm x 30.5 cm) wipe, bulk	150	•	4

Key: **IB** = Inner Bag **OB** = Outer Bag



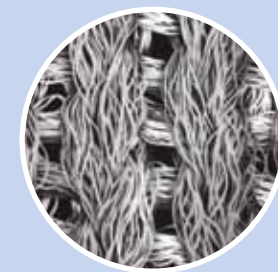
KNITS

Interlock knit is a variation of a rib knit in which any given stitch will reveal another knit stitch directly behind it on the back of the cloth. This provides a slightly heavier basis weight and a more durable fabric.

No-run interlock knit is similar to interlock knit, but adds a periodic extra stitch that does not allow the fabric to unravel, creating a very durable fabric.



Interlock knit



No-run interlock knit



Finding Your Contec Sales Representative

To find your local area Contec Sales Representative, visit www.contecinc.com and go to the "Sales Rep Locator" section. Your representative's name and contact information is automatically displayed when you select your industry and region.

QuiltZorb™ 2-ply sorbent wipe

- 2-ply construction increases strength and durability
- The most sorbent wipe available
- Laundered and packaged in a ISO Class 4 cleanroom
- Excellent sorbency with solvents
- Abrasion and chemical resistant
- Fully autoclavable

Applications

- General purpose cleaning of critical environments where sorbency is required
- Cleaning surfaces of process tools and other equipment
- General product wipe down and/or drying



Part #	Description	Wipes/Bag	Bags/Case
QTK-1212B/500	12" x 12" (30.5 cm x 30.5 cm) wipe, bulk	125	4

Pyrogens

Pyrogens are fever-producing substances derived from the outer shell membranes of decaying bacteria. Bacterial endotoxins, from the outer membranes of gram-negative bacteria, are the most common pyrogens. The presence of pyrogens is a critical safety concern since these substances cannot be easily removed. Products contaminated with pyrogens can pose a life-threatening risk to patients. Use of nonpyrogenic sterile wipes during manufacturing reduces the potential for pyrogen contamination often observed in today's nonwoven wipes.

DuPont™ Sontara® Nonpyrogenic Wipes

Sterile nonpyrogenic nonwoven wipes

- Constructed from DuPont Sontara lyocell/polyester blend fabric processed to minimize pyrogen contamination
- Meets the FDA standard for bacterial endotoxins using Limulus Amoebocyte Lysate at the endotoxin limit for medical devices at <20 EU/device
- Low levels of particles and extractables
- High water and solvent sorbent capacity and rate
- Gamma irradiated and validated sterile to 10⁻⁶ SAL per AAMI/ISO 11137:2006 Guidelines
- Unique surface texture provides effective cleaning and particle removal
- Embossed lot numbers on all bags ensures lot traceability while low wipe counts in inner bags preserves sterility and minimizes waste

Applications

- The first sterile nonpyrogenic nonwoven wiping product designed for the biotech, pharmaceutical, and medical device industries
- Ideal for wiping articles prior to pass through, cleaning the exterior surfaces of equipment, and facilities cleaning



Part #	Description	Wipes/Bag	IB/OB	Bags/Case
NWPZ0001	9" x 9" (22.9 cm x 22.9 cm) wipe, sterile	25	4	10
NWPZ0002	12" x 12" (30.5 cm x 30.5 cm) wipe, sterile	25	4	10

Key: IB = Inner Bag OB = Outer Bag



Amplitude™ Delta™ 100% polyester nonwoven wipes

- Extremely soft and clean
- Strong and durable; compatible with most solvents
- Low levels of particles and extractables
- Nonabrasive texture
- Designed for cleaning delicate optical products such as lenses and mirrors
- Excellent for wiping and absorbing acid and solvent spills
- Wipedown products prior to introduction to cleanroom

Part #	Description	Wipes/Bag	Bags/Case
AMDE0003	4" x 4" (10.2 cm x 10.2 cm) wipe	1200	12
AMDE0004	6" x 6" (15.2 cm x 15.2 cm) wipe	300	15
AMDE0001	9" x 9" (22.9 cm x 22.9 cm) wipe	300	8
AMDE0002	12" x 12" (30.5 cm x 30.5 cm) wipe, bulk	150	16



Amplitude™ Kappa™ 45% Lyocell/55% polyester nonwoven wipes

- Exceptional cleanliness with low levels of fibers and particles
- Highly sorbent with water and solvents
- Soft texture
- Used for wiping delicate surfaces, sensitive components

Part #	Description	Wipes/Bag	Bags/Case
AMLPL0001	9" x 9" (22.9 cm x 22.9 cm) wipe	250	12
AMLPL0002	12" x 12" (30.5 cm x 30.5 cm) wipe	125	18



Amplitude™ Prozorb® Textured polyester/cellulose nonwoven wipes

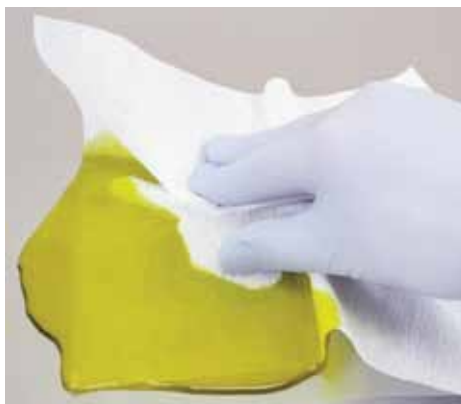
- Low levels of particles and extractables; highly sorbent
- Apertured surface texture promotes effective cleaning and particle removal

Applications

- Specifically designed for the biotech, pharmaceutical, electronics, medical device, semiconductor, and microelectric industries
- Great for spill cleanup in critical environments
- Designed for nonabrasive applications
- Can be used for product wipedown

Part #	Description	Wipes/Bag	IB/OB	Bags/Case
PZ-44	4" x 4" (10.2 cm x 10.2 cm) wipe	800	•	12
PZ-99	9" x 9" (22.9 cm x 22.9 cm) wipe	200	•	12
PZ-1212	12" x 12" (30.5 cm x 30.5 cm) wipe	100	•	18

Key: IB = Inner Bag OB = Outer Bag



NONWOVENS

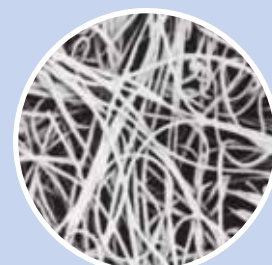
Nonwoven fabrics can be made through many different methods.

Hydroentangled Thousands of high-pressure (up to 2000 psi) needle-like jets shoot water at a batting of blended fibers to form a fabric.

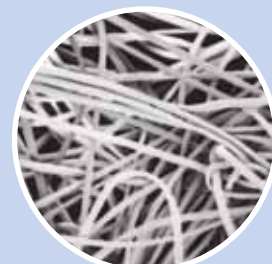
Hydraulically-entangled Pressure drums squeeze a slurry of fibers and water together to form a fabric.

Meltblown Fibers are extruded into a material which is then textured.

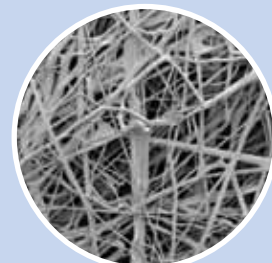
Nonwoven fabrics can be made from polyester, cellulose, rayon, polypropylene or various blends of these fibers. Each type of fiber has a particular strength that makes it suitable for critical environment applications. Polyester provides durability, chemical compatibility and cleanliness. Cellulose and rayon provide sorbency and are economical. Polypropylene provides exceptional cleanliness.



Nonwoven
Polyester/Cellulose



Nonwoven Polyester



Meltblown Polypropylene



www.contecinc.com

Log on to our web site to:

- Request product samples
- Download Technical Data
- Download catalogs and product literature
- Access our Material Safety Data Sheet library (*must have product part number*)
- Find a sales representative in your region
- Learn more about Contec and our cleaning products for critical environments

Amplitude™ Helix™ Nonwoven meltblown polypropylene wipes

- Low levels of particles and extractables
- Durable and sorbent meltblown polypropylene
- High water and solvent sorbent capacity and rate
- Resistant to acids and chemicals
- Ideal for absorbing spills, including acids
- Specifically designed for the biotech, pharmaceutical, electronics, medical device, precision instrument, and semiconductor industries

Part #	Description	Wipes/Bag	Bags/Case
AMHX0003	9" x 9" (22.9 cm x 22.9 cm) wipe	200	12
AMHX0004	12" x 12" (30.5 cm x 30.5 cm) wipe	100	18



Tax-Fre® Mop Cleanroom tack-cloth dry mop

Designed for dry mopping floors and walls, the Tax-Fre Mop utilizes the same low-residue pressure-sensitive material as Tax-Fre wipes. The 23" x 5" (58.4 cm x 12.7 cm) tapered swivel head attached to a light-weight 8' (2.4 m) telescoping handle enables the operator to clean in hard to reach areas. All hardware is cleanroom compatible. The unique construction of the Tax-Fre mop head allows the use of multiple sheets that can easily be removed when contaminated, revealing a fresh sheet for continued cleaning. The Tax-Fre Mop is ideal to use when dry cleaning is recommended.

Part #	Description	Pieces/Bag	Bags/Case
TAX-FRE	10" x 18" (25.4 cm x 45.7 cm) wipe	100	4
TF-1228	12" x 28" (30.5 cm x 71 cm) floor mop covers	50	4

Tax-Fre Mop Hardware		Each/Case
UF211	23" x 5" (58.4 cm x 12.7 cm) swivel mop head	1
WWP08	8' (2.4 m) aluminum extension handle, 2 piece	1



Foamtec®

Reticulated 100 pore-per-inch polyurethane foam wipes

- Good sorptive capacity
- Excellent for trapping and holding particulate contamination
- Designed for screen cleaning in microelectronics and other applications
- Excellent as padding to reduce vibration



Part #	Description	Wipes/Bag	Bags/Case
F9-691/16L	6" x 9" x 1/16" (15.2 cm x 22.9 cm x 1.6 mm) foam wipe, laundered	25	20
F9-9101/16L	9" x 10" x 1/16" (22.9 cm x 25.4 cm x 1.6 mm) foam wipe, laundered	25	20
F9-691/8L	6" x 9" x 1/8" (15.2 cm x 22.9 cm x 3.2 mm) foam wipe, laundered	25	20
F9-9101/8L	9" x 10" x 1/8" (22.9 cm x 25.4 cm x 3.2 mm) foam wipe, laundered	25	20
F9-9121/8	9" x 10" x 1/8" (22.9 cm x 25.4 cm x 3.2 mm) foam wipe	50	12

TYPES of FOAM

Reticulated foam, also called "open cell foam", simply means that the walls of the bubbles (or cells) that make-up the foam are removed in a variety of processes after the foam is made. It provides a much lower risk of particle contamination and is better at picking-up surface particles than non-reticulated foam.

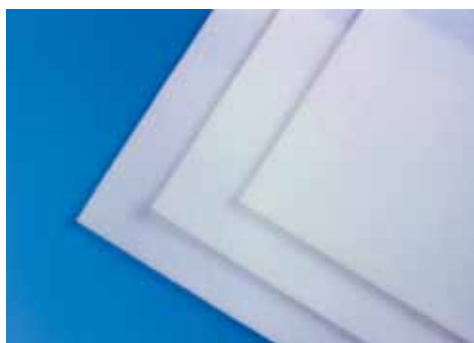
Non-reticulated foam, also called "closed cell foam", still has the walls of the foam cells intact. This provides a somewhat softer feel to the foam, and also increases the ability of the foam to hold liquids.

An easy way to tell the difference: non-reticulated foam will appear shiny and glittery as light is reflected off the walls of the cells.

FoamZorb™

Non-reticulated hydrophilic polyurethane foam wipes

- High sorptive capacity
- Low levels of extractable residues and particles
- Excellent for spill pickup
- Designed for solvent or solution application
- Ideally suited for lithographic screen cleaning
- Excellent for reduction of vibration under sensitive products



Part #	Description	Wipes/Bag	Bags/Case
FZ451/8	4" x 5" x 1/8" (10.2 cm x 12.7 cm x 3.2 mm) foam wipe	50	20
FZ881/8/KEM	8" x 8" x 1/8" (20.3 cm x 20.3 cm x 3.2 mm) foam wipe	18	56

EliminatR® Sock & Pillow

Disposable cleanroom spill control products

- Constructed of 100% knitted polyester
- Outer covering is a durable two-ply polyester
- Cellulose-free
- Compatible with gamma, ETO and autoclave sterilization
- Acid resistant; excellent sorbency with aqueous spills
- Superior capacity with oils and solvents



Part #	Description	Pieces/Bag	Bags/Case
ELRPIL	12" x 12" x 1" (30.5 cm x 30.5 cm x 2.5 cm) sorbent pillow	1	12
ELRPIL2	12" x 72" x 1" (30.5 cm x 182.9 cm x 2.5 cm) sorbent pillow	1	4
ELRSOC	36" x 3" (91.4 cm x 7.6 cm) sorbent sock	1	12



SATWipes® Cleaning System

Presaturated wipes in reusable canisters

The **SATWipes Cleaning System** consists of presaturated wipes dispensed from a center pull roll in a reusable canister. A variety of wipe fabrics, canisters and lids, as well as solvent blends, are available to meet your needs.

Originally developed as a safer, better way to use solvents and wipes, SATWipes are a convenient solution for many critical cleaning applications. The reusable canisters are available in a variety of sizes, and other packaging options are available. Wipes are dispensed from a perforated center-pull roll, available in several sizes. To preserve product integrity, the rolls are packaged in specially designed foil pouches, which are opened and loaded inside the SATWipes canister.

SATWipes can be saturated with a variety of solvents and blends. Wipe substrates include spunlace polyester (Amplitude Delta), spunlace polyester/cellulose (Amplitude Sigma), spunlace rayon and meltblown polypropylene.



Wipe Size

SATWipes® presaturated wipes are available on perforated rolls in a variety of fabrics, widths, and lengths. Control over the perforation process allows Contec to adjust perforation strength so that wipes perform as desired with center pull canisters, regardless of the base material. Size of the finished roll can be maximized to fit the canister used. By using the most appropriate wipe size for your application, wipe usage is minimized and waste is reduced.

SATWipes® Sizes

- 4" x 4 1/4" (10 cm x 10.8 cm)
- 6" x 4 1/2" (15 cm x 10.8 cm)
- 6" x 9" (15.2 cm x 22.9 cm)
- 9" x 11" (23 cm x 28 cm)
- 11" x 17" (28 cm x 43 cm)
- 12" x 12 1/2" (30.5 cm x 32 cm)

Not all sizes are available in each fabric and solvent. Please call for commercially available options.

SATWipes®

Presaturated 100% polyester or polyester/cellulose nonwoven wipes

- SATWipes with polyester fabric are ISO Class 5 compatible; SATWipes with polypropylene, rayon and polyester/cellulose fabric are ISO Class 6-8 compatible.
- Presaturated with various blends of IPA and DI Water; custom solvent and blends are available
- Dispensed from a center-pull canister
- Low levels of particles and extractable contaminants
- Each package is individually lot numbered
- Presaturated wipe refills are available

Applications

- Cleaning process tools and other equipment
- Wipe down prior to cleanroom entry
- General purpose cleaning and surface preparation



Part #	Description	Wipes/Roll	Rolls/Case	Canisters/Case
SAT-C3-694	6" x 9" (15.2 cm x 22.9 cm) polyester nonwoven wipe, 750ml 6% IPA/94% DI Water	185	12	1
SAT-C3-7030	6" x 9" (15.2 cm x 22.9 cm) polyester nonwoven wipe, 750ml 70% IPA/30% DI Water	100	12	1
SAT-C3-7030/18	6" x 9" (15.2 cm x 22.9 cm) polyester nonwoven wipe, 750ml 70% IPA/30% DI Water*	100	18	•
SAT-C3-100	6" x 9" (15.2 cm x 22.9 cm) polyester nonwoven wipe, 750ml 100% IPA	100	12	1
SAT-C1-1090	6" x 9" (15.2 cm x 22.9 cm) poly/cellulose nonwoven wipe, 500ml 10% IPA/90% DI Water	100	12	1
SAT-C1-7030	6" x 9" (15.2 cm x 22.9 cm) poly/cellulose nonwoven wipe, 500ml 70% IPA/30% DI Water	100	12	1
SAT-C1-7030/18	6" x 9" (15.2 cm x 22.9 cm) poly/cellulose nonwoven wipe, 500ml 70% IPA/30% DI Water*	100	18	•
SAT-C1-100	6" x 9" (15.2 cm x 22.9 cm) poly/cellulose nonwoven wipe, 500ml 100% IPA	100	12	1

* SAT-C3-7030/18 and SAT-C1-7030/18 are refill pouch part numbers. No canisters are included.

SterileSorb™

Sterile hydroentangled polyester/cellulose wipes

- Strong and durable wipe, even when wet
- Low levels of particles and extractables
- Extremely absorbent
- Gamma irradiated and validated sterile to 10⁻⁶ SAL per AAMI/ISO 11137:2006 Guidelines
- Lot specific Certificates of Sterility are shipped with every case of product
- Innovative package design features a peelable outerbag and linear tear inner bag to preserve the integrity of sterile wipes
- Low wipe counts in inner bags preserves sterility and minimizes waste
- Excellent for wiping and absorbing spills and general purpose cleaning in biotech, pharmaceutical, and medical device manufacturing environments



Sterility and Irradiation

Sterility is the absence of living organisms. The Sterility Assurance Level (SAL) of a product is defined as the probability of any given unit being non-sterile after exposure to a validated sterilization process.

Common sterilizing methods include radiation, exposure to gases such as ethylene oxide (ETO), chemical sterilization using hydrogen peroxide, and exposure to dry and steam (autoclave) heat.

Irradiation is the act of exposing a product to ionizing radiations for the purpose of sterilizing. Radiation sources include gamma rays, electron beam, beta rays and x-rays.

Part #	Description	Wipes/IB	IB/OB	OB/Case
C2-991R/25	9" x 9" (22.9 cm x 22.9 cm) wipe, sterile	25	6	10
C2-12121R	12" x 12" (30.5 cm x 30.5 cm) wipe, sterile	25	6	7

Key: **IB** = Inner Bag **OB** = Outer Bag



LIFE SCIENCES
MICROELECTRONICS
USP<797> COMPLIANCE

SIMPLE SOLUTIONS FOR COMPLEX PROBLEMS



Contec, Inc. manufactures wipes, mops, disinfectants, sterile IPA and other products for critical cleaning. Visit www.contecinc.com or contact us at +1-864-699-8252 to request an evaluation sample today!

 **CONTEC®**



Amplitude™ Sigma™ Hydroentangled polyester/cellulose wipe

- Strong and durable hydroentangled fabric
- Low levels of particles and extractables
- Extremely absorbent
- Designed for nonabrasive applications
- Excellent for wiping and absorbing spills
- General purpose cleaning in biotech, pharmaceutical, semiconductor, electronics, medical device, and printed circuit board industries
- Double packaged to preserve product integrity

Part #	Description	Wipes/ Bag	Bags/Case
AMSI0001	9" x 9" (22.9 cm x 22.9 cm) wipe	300	12
AMSI0002	12" x 12" (30.5 cm x 30.5 cm) wipe	150	18
AMSI0003	18" x 18" (45.7 cm x 45.7 cm) wipe	75	10



Amplitude™ Epsilon™ Blue cellulose/polyester wipes

- Strong and durable hydroentangled fabric provides improved cleanliness and excellent sorbency
- Low levels of particles and extractables
- Dye-fast blue color allows for differentiation in critical areas
- Use as a work surface mat for better visual inspection
- Excellent for wiping and absorbing spills
- General purpose cleaning in biotech, pharmaceutical, semiconductor, electronics, medical device, and printed circuit board industries

Part #	Description	Wipes/ Bag	Bags/Case
AMEP0001	9" x 9" (22.9 cm x 22.9 cm) wipe	300	12
AMEP0002	12" x 12" (30.5 cm x 30.5 cm) wipe	150	20



Amplitude™ Optic Wipe Absorbent nonabrasive optical-grade Abaca cellulose wipes

- Nonwoven, long staple fiber construction
- Very low extractable levels; moderate particle generation
- Used as a lining for cleanroom surfaces and trays
- Ideal as separating layers between CDs and silicon wafers
- Used in packaging and storage of optical products
- Ideal for drying critical products

Part #	Description	Wipes/ Bag	Bags/Case
C6-99	9" x 9" (22.9 cm x 22.9 cm) wipe	500	25
C6-1212	12" x 12" (30.5 cm x 30.5 cm) wipe	500	20



The Amplitude Optic Wipe has been designed for delicate cleaning of optical products, microminiature electronic components and medical devices.

Amplitude™ EcoCloth™

Absorbent nonwoven polyester/cellulose wipes

- Strong and durable hydroentangled nonwoven fabric
- Low levels of particles and extractables
- The most absorbent polyester/cellulose wipe in terms of weight to capacity ratio
- Cost effective
- Excellent wipe for less critical applications
- Designed for nonabrasive applications
- Ideal for wipedown of products prior to introduction to cleanroom
- Double packaged to preserve product integrity

Part #	Description	Wipes /Bag	Bags /Case
AMEC0001	4" x 4" (10.2 cm x 10.2 cm) wipe	1200	12
AMEC0002	6" x 6" (15.2 cm x 15.2 cm) wipe	300	20
AMEC0003	9" x 9" (22.9 cm x 22.9 cm) wipe	300	12
AMEC0004	12" x 12" (30.5 cm x 30.5 cm) wipe	150	14
AMEC0005	18" x 18" (45.7 cm x 45.7 cm) wipe	75	10



*over traditional spunlace nonwovens

Amplitude™ Theta™

Lightweight cellulose/polyester wipes

- Strong and durable spunlaced fabric
- Economical and cost effective absorbent wipe for general cleaning applications
- Double packaged to preserve product integrity
- Ideal for cleaning work surfaces and spill pickup
- General purpose wiping and polishing of surfaces
- Designed for non abrasive applications

Part #	Description	Wipes /Bag	Bags /Case
AMTH0001	9" x 9" (22.9 cm x 22.9 cm) wipe	300	12
AMTH0002	12" x 12" (30.5 cm x 30.5 cm) wipe	150	22



Amplitude™ Zeta™

Thermally bonded cellulose and nonwoven polypropylene quilted wipes

- 3-ply quilted texture is highly soprtive and allows for segregation by appearance
- Inner core of cellulose sealed between two layers of meltblown polypropylene
- Strong resistance to acids
- Designed to pick up acid spills
- Ideal for use as tray liners
- Double packaged to preserve product integrity

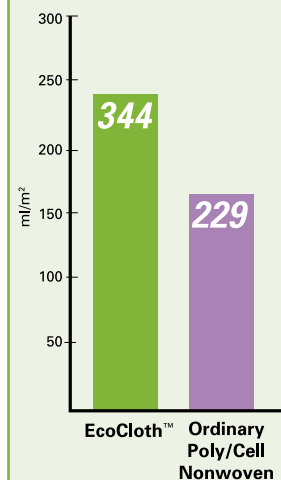
Part #	Description	Wipes /Bag	Bags /Case
AMZE0001	8" x 9" (20 cm x 22.9 cm) wipe	150	12
AMZE0002	11" x 12" (28 cm x 30.5 cm) wipe	75	20



ECO-FRIENDLY

Ever-conscious of our environment, Contec developed EcoCloth™ to help our customers reduce their solid waste. EcoCloth is slightly lower in basis weight than a standard polyester/cellulose material. Due to additional loft in the fabric, this wipe has greater sorbency than a polyester/cellulose wipe in terms of weight to capacity. The lower basis weight of EcoCloth can reduce your solid waste by up to 40%. EcoCloth is a more "eco" friendly choice.

EcoCloth™ Sorbency





www.contecinc.com

Log on to our web site to:

- Request product samples
- Download technical data sheets
- Download catalogs
- Find a sales representative in your region
- Learn more about Contec and our cleaning products for critical environments

Polywipe Light & Polywipe Extra

Clean processed polyester knit wipes

- Polywipe Light is a lightweight interlock knit
- Polywipe Extra is a heavier interlock knit with greater sorbency and durability
- Knife-cut edges
- Double bagged to ensure product integrity
- Lot numbers provide traceability

Applications

- Ideal for product or equipment wipe down
- Ideal for downtime/shut down clean up and surface preparation
- Ideal for back-end manufacturing in the electronics industry

Part #	Description	Wipes/Bag	Bags/Case
Polywipe Light			
7070-99	9" x 9" (22.9 cm x 22.9 cm) wipe	150	12
7070-1212	12" x 12" (30.5 cm x 30.5 cm) wipe	100	10
Polywipe Extra			
3022-99	9" x 9" (22.9 cm x 22.9 cm) wipe	150	8
3022-1212	12" x 12" (30.5 cm x 30.5 cm) wipe	75	10



Polywipe Extra is also available with sealed edges. For part numbers, please contact your Contec representative, call toll free 1-866-855-4721, or visit our website.

WOVEN FABRIC

Woven fabric is created by weaving together two or more sets of warp and fill yarn fibers. The fibers can be polyester, nylon, cotton, or others. These fibers are woven together utilizing combinations of three basic weaves: plain, twill, and satin. By using combinations of these three styles an infinite number of patterns can be created. A standard twill pattern is commonly seen in the cleanroom industry. Durability is the best feature of woven material.



Woven Fabric

Twill Jean

Strong, durable and absorbent
100% cotton twill wipe

- Woven in a twill construction for sorbency
- Strong, durable, and absorbent
- Bias cut to prevent unraveling
- High thermal stability for high temperature applications
- Durable and strong wipe for tool cleaning
- Excellent for surface cleaning or spill pick up

Part #	Description	Wipes/Bag	Bags/Case
TJ-44	4" x 4" (10.2 cm x 10.2 cm) wipe	1200	12
TJ-66	6" x 6" (15.2 cm x 15.2 cm) wipe	600	10
TJ-99	9" x 9" (22.9 cm x 22.9 cm) wipe	300	12
TJ-1212	12" x 12" (30.5 cm x 30.5 cm) wipe	150	10
TJ-1717	17" x 17" (43.2 cm x 43.2 cm) wipe	75	12



TuffStuff™

Polyester/cellulose critical task wipes

- TuffStuff critical task wipes offer strength, absorbency and versatility
- Exceptional performance at an economical price
- Low linting, solvent-resistant wipe maintains high strength, even when wet
- Available in premium creped white, creped white and premium creped blue
- Wipes are packaged in a variety of configurations: single or double pop-up dispenser boxes; dispenser rolls; quarterfolded; or stacked
- Recommended for critical cleaning in biotech, pharma, electronics and similar industries
- Ideal for heavy equipment maintenance, institutional cleaning and production line maintenance
- Great for general cleaning in early stages of cleanroom construction



Low linting, solvent-resistant TuffStuff wipes are ideal for many cleaning tasks in controlled environments. Visit www.contecinc.com to view Contec's complete line of general purpose nonwoven wipes.



Part #	Description	Wipes/Pkg.	Pkg./Case
TSWC0917	9" x 16.5" (23 x 42 cm) wipe, premium creped white, pop-up dispenser box	100/box	1
TSWC1217	12" x 16.5" (30.5 x 42 cm) wipe, premium creped white, pop-up dispenser box	250/box	1
TSWC1214	12" x 14" (30.5 x 35.5 cm) wipe, creped white, roll in dispenser box	500/roll	30
C1C1217Q	12" x 17" (30.5 x 42 cm) wipe, creped white, quarterfolded	500/bag	2
TSWL1213	12" x 13" (30.5 x 33 cm) wipe, light weight creped white, quarterfolded	50/bag	18

VK Sponge

Absorbent, abrasion resistant sponge

- High sorbency polyester foam with the abrasion resistance of Polynit fabric
- Available with textured polyester surface
- Laser cut to completely seal the edges
- Designed for general cleaning and wiping; ideal for use in the laboratory
- Autoclavable or available as a sterile ready-to-use product



Part #	Description	Sponges/Bag	Bags/Case
VKSPONGE-1	VK Sponge, 8.5" (21.6 cm), single ply	8	12
VKST0003	VK Sponge, 5" (12.7 cm), single ply, sterile	15	8

Key: **IB** = Inner Bag **OB** = Outer Bag



Need a sample?

As a service to our customers, we gladly provide samples of our products. Our Sample Department typically processes requests within 24 hours. Some saturated and custom items may take longer. Samples can be requested by phone, fax, e-mail, or on our website, www.contecinc.com. Contact your Contec representative for more details.

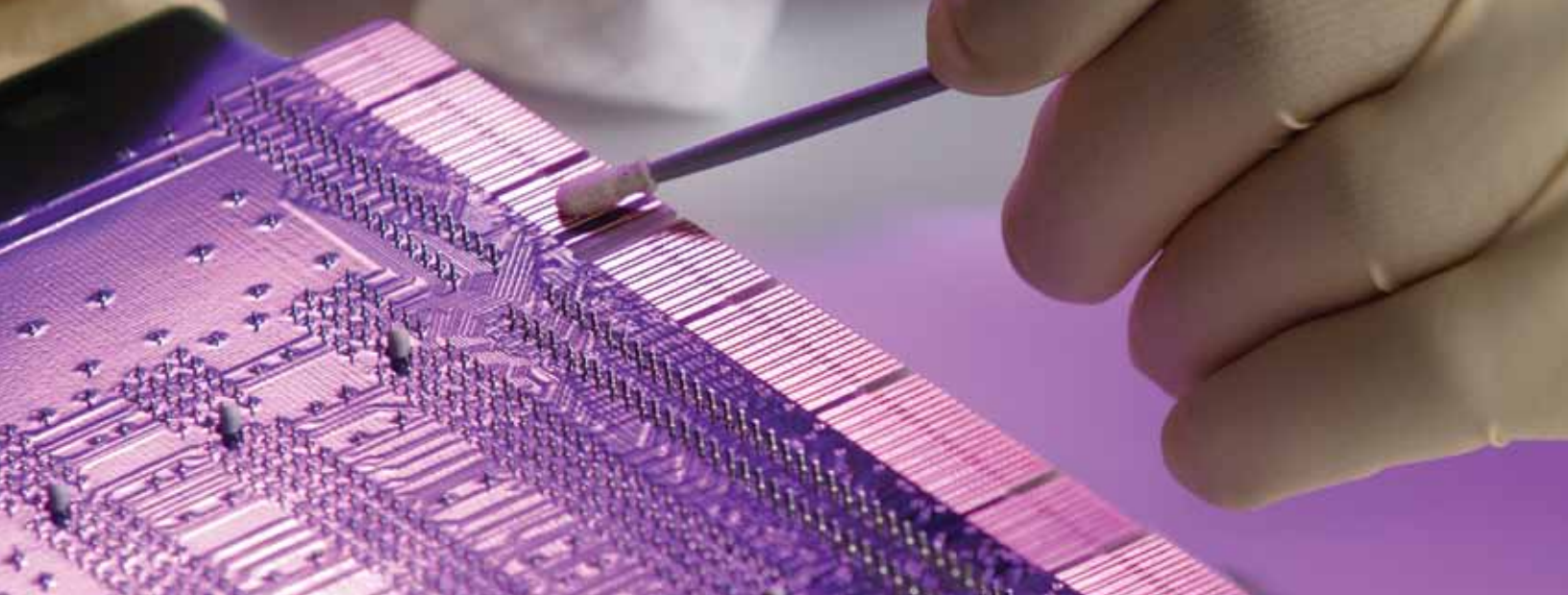
Product Samples

e-mail:
wipers@contecinc.com

web site:
www.contecinc.com

phone:
toll-free: 1-866-855-4721
or +1-864-699-8252

CONSTIX™ Swabs



CONSTIX SC Series cotton swabs provide the lowest levels of fiber and residue of any cotton swabs available.

The ultra-low levels of residue make them ideal for applications such as cleaning lenses and mirrors in high-level optics and lasers.

Visit www.contecinc.com, (key word: swabs) to view the entire CONSTIX product line.

With over thirty unique swabs available, Contec's CONSTIX™ swab line offers a solution to almost any swab application challenge. Included are sealed and wrapped foam swabs for general applications, sealed and wrapped polyester swabs for applications with critical contamination sensitivity, and static dissipative and conductive swabs for static sensitive applications.

Sealed Foam Swabs

Contec's SF Series swabs have 100 PPI polyurethane foam heads for strength and abrasion resistance. This foam is excellent for particle entrapment and retention, making these swabs ideal for applying lubricants and removing excess materials. Compatible with Isopropyl Alcohol.

Sealed Polyester Swabs

Contec's SP Series swabs have heads made from our Polynit polyester cleanroom fabric for exceptionally low residue and particulate levels. These swabs are the best option for use with harsh solvents such as acetone, trichloroethane, and nitric and sulfuric acids.

Cotton Swabs

Made with the longest staple cotton fibers and a simple methyl-cellulose binder, Contec's SC Series swabs provide very low levels of extractable residue, particles, and fibers. Unlike traditional cotton swabs, these swabs offer the most tightly wrapped heads of any cotton swab available anywhere. This results in cotton swabs that are appropriate for use in some of the most critical applications, including disk drive manufacturing and high-level optical surfaces.

Conductive Swabs

Several CONSTIX swabs are available with truly conductive handles for ESD sensitive applications.

Wrapped Swabs

Several CONSTIX swabs are available with tips wrapped with either sealed foam or Polynit fabric.

Surface Validation Swabs

Designed for the evaluation of surface cleaning protocols in bio-pharmaceutical industries, our SV Series swabs are made of Polynit polyester fabric that undergoes a proprietary process to reduce Total Organic Carbon levels and packaged in autoclavable nylon pouches.

CONSTIX™ Swabs

SF Series 100 pore-per-inch sealed polyurethane foam for strength and abrasion resistance

SP Series 100% Polyester cleanroom fabric for exceptionally low residue and particulate levels

SC Series Long staple cotton fibers with a methyl-cellulose binder ideal for disk drive manufacturing


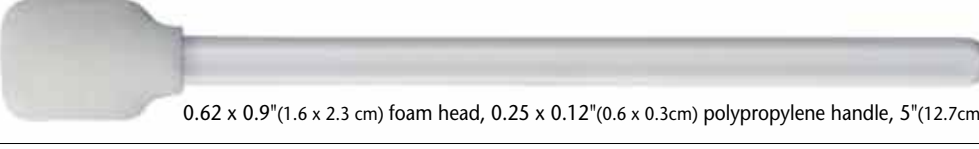
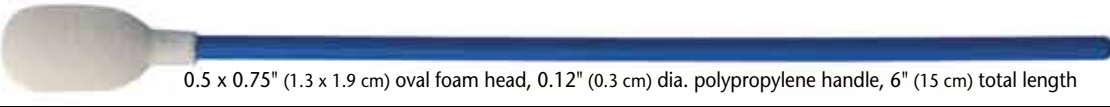
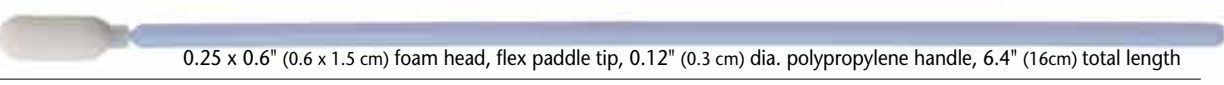


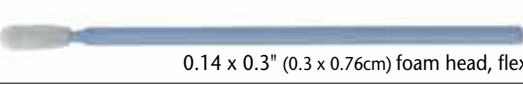
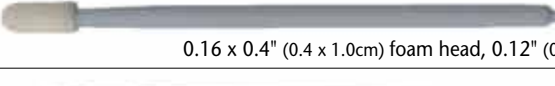
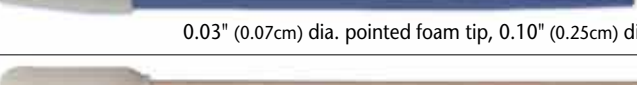
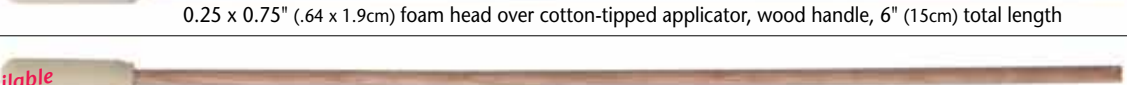

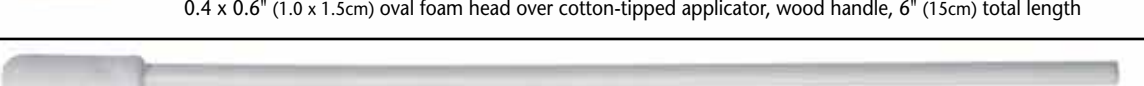
ESD Series Truly conductive handles for electrostatic dissipative applications

SFW Series Wrapped swabs with tips made from foam or knitted polyester

SV Series Swabs for evaluation of surface cleaning protocols in bio-pharmaceutical industries

Sealed Foam Swabs

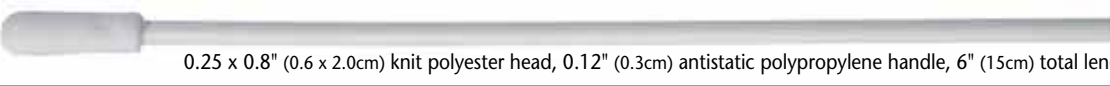
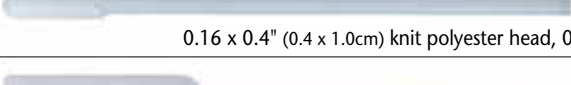
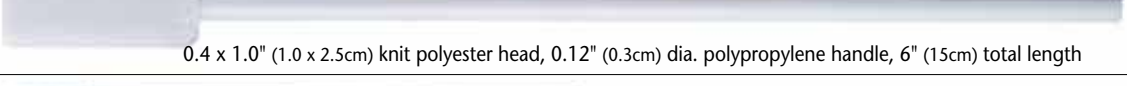
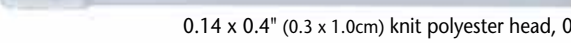
500/case

- | | | |
|--------------|--|--|
| SF-1 |  | 0.96"(2.4 cm) round foam head, 0.26 x 0.12" (0.6 x 0.3cm) polypropylene handle, 5"(12.7cm) total length |
| SF-2 |  | 0.62 x 0.9"(1.6 x 2.3 cm) foam head, 0.25 x 0.12"(0.6 x 0.3cm) polypropylene handle, 5"(12.7cm) total length |
| SF-3 |  | 0.5 x 0.75" (1.3 x 1.9 cm) oval foam head, 0.12" (0.3 cm) dia. polypropylene handle, 6" (15 cm) total length |
| SF-5 |  | 0.25 x 0.6" (0.6 x 1.5 cm) foam head, flex paddle tip, 0.12" (0.3 cm) dia. polypropylene handle, 6.4" (16cm) total length |
| SF-6 |  | 0.3 x 0.8" (0.8 x 2cm) non-reticulated foam head, flex tip, 0.2" (0.5cm) dia. polypropylene tube handle, 4.5" (11.4cm) total length |
| SF-7 |  | 0.2 x 0.5" (0.5x1.3cm) non-reticulated foam head, flex tip, 0.19" (0.5cm) dia. polypropylene tube handle, 4.2" (10.7cm) total length |
| SF-9 |  | 0.14 x 0.3" (0.3 x 0.76cm) foam head, flex tip, 0.10" (0.25cm) dia. polypropylene handle, 2.6" (6.6cm) total length |
| SF-12 |  | 0.16 x 0.4" (0.4 x 1.0cm) foam head, 0.12" (0.3cm) dia. polypropylene handle, 2.8" (7.1cm) total length |
| SF-13 |  | 0.03" (0.07cm) dia. pointed foam tip, 0.10" (0.25cm) dia. glass/nylon handle, 3.2" (8.1cm) total length |
| SF-17 |  | 0.25 x 0.75" (.64 x 1.9cm) foam head over cotton-tipped applicator, wood handle, 6" (15cm) total length |
| SF-18 |  | 0.18 x 0.75" (.46 x 1.9cm) foam head over 0.09" (0.23cm) dia. wood dowel, 6" (15cm) total length |
| SF-19 |  | 0.4 x 0.6" (1.0 x 1.5cm) oval foam head over cotton-tipped applicator, wood handle, 6" (15cm) total length |

No longer available

Sealed Polyester Swabs

500/case

- | | | |
|-------------|--|--|
| SP-1 |  | 0.25 x 0.8" (0.6 x 2.0cm) knit polyester head, 0.12" (0.3cm) antistatic polypropylene handle, 6" (15cm) total length |
| SP-2 |  | 0.16 x 0.4" (0.4 x 1.0cm) knit polyester head, 0.10" (0.25cm) dia. Delrin® handle, 3" (7.6cm) total length |
| SP-3 |  | 0.4 x 1.0" (1.0 x 2.5cm) knit polyester head, 0.12" (0.3cm) dia. polypropylene handle, 6" (15cm) total length |
| SP-4 |  | 0.14 x 0.4" (0.3 x 1.0cm) knit polyester head, 0.09" (0.2cm) dia. polypropylene handle, 2.7" (6.8cm) total length |




Sealed Polyester Swabs

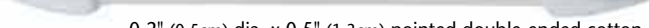
500/case **SP-5**  0.08" x 0.4" (0.2 x 1.0cm) knit polyester head, 0.09" (0.23 cm) dia. Delrin® handle, 3" (7.6cm) total length

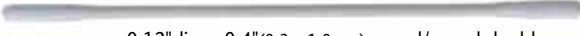
500/case **SP-7**  0.08" x 0.4" (0.2 x 1.0cm) nonwoven polyester head, 0.09" (0.23 cm) dia. Delrin® handle, 3" (7.6cm) total length


ESD Swabs


500/case **SF-13ESD**  0.03" (0.07cm) dia. pointed foam tip, 0.10" (0.23 cm) dia. conductive polypropylene handle, 3.2" (8.1cm) total length


Cotton Swabs

3,750/case **SC-1**  0.2" (0.5cm) dia. x 0.5" (1.3cm) pointed double-ended cotton swab, 3" (7.6 cm) total length


5,000/case **SC-3**  0.12" dia. x 0.4" (0.3 x 1.0 cm) round/round double-ended cotton swab, 3" (7.6 cm) total length


5,000/case **SC-4**  0.08" dia. x 0.3" (0.2 x 0.76 cm) hard sharp pointed tip, double-ended cotton swab, 3" (7.6 cm) total length


5,000/case **SC-7**  0.1" dia. x 0.4" (0.25 x 1.0 cm) sharp pointed tip, double-ended cotton swab, 3" (7.6 cm) total length

2,000/case **SC-9**  0.2" dia. x 0.6" (0.5 x 1.5 cm) single round cotton swab, wood handle, 6" (15 cm) total length


Wrapped Swabs


500/case **SFW-1**  Pointed, wrapped foam head, 0.09" (0.23 cm) dia. wood toothpick handle, 2.6" (6.6 cm) total length

500/case **SFW-3**  0.5" (1.27cm) dia. foam head banded over cotton-tipped applicator, wood handle, 6" (15 cm) total length

500/case **SPW-1**  0.25" x 0.7" (0.64 x 1.78 cm) folded knit polyester head, 0.12" (0.3cm) dia. polypropylene handle, 6" (15cm) total length

Cleaning Validation Swabs

5 swabs/
autoclavable
nylon pouch **SV-1**  0.4 x 1.0" (1.0 x 2.5cm) knit polyester head, 0.12" (0.3cm) dia. polypropylene handle, 6" (15cm) total length
Autoclavable; specially processed for low Total Organic Carbons

SV-2  0.25 x 0.8" (0.64 x 2.0cm) knit polyester head, 0.12" (0.3cm) antistatic polypropylene handle, 6" (15cm) total length
Autoclavable; specially processed for low Total Organic Carbons

Accel TB® Ready-to-Use disinfectant

Accel TB is an EPA registered intermediate level disinfectant that is safe and fast acting with a broad spectrum kill. Accel TB is based on Accelerated Hydrogen Peroxide technology (AHP), a synergistic blend of commonly used, safe ingredients that, when combined with low levels of hydrogen peroxide, dramatically increase its germicidal potency and cleaning performance. AHP is the first new EPA registered disinfectant technology in 20 years.

Compatible with an extensive list of common materials, including 316 & 304 stainless steel, natural & silicone rubber, and most plastics. Ideal for use on environmental surfaces in pharmaceutical cleanrooms, compounding pharmacies, labs and other GMP facilities. Available only in the United States.

Part #	Description	Packaging
ACCDISR-TB32	Ready to Use Liquid, 32 oz. (0.9L) bottle	12 bottles/case
ACCTRIGR	Non-aerosol trigger sprayer for 32 oz. bottle	12 sprayers/case
ACCDISR-TBG	Ready to Use Liquid, 1 gallon (3.8L)	4 gallons/case
ACCDISR-TB5G	Ready to Use Liquid, 5 gallons (18.9L)	1 container/case
ACCWIP1-TBUS	Accel TB Disinfectant Wipes, 6 x 7 in (15 x 18cm), meltblown polypropylene	160 wipes/canister; 12 canisters/case



EPA Registered Claims for Accel TB

30 Second Non Food Contact Broad-Spectrum Sanitizer giving a 3 Log (99.9%) reduction in Vegetative Bacteria*

1 minute Bactericidal Claim giving a 6 Log (99.9999%) reduction in Vegetative Bacteria*

1 minute General Virucide Claim giving a 3 Log (99.9%) reduction*

5 minute Mycobactericidal Claim giving a 4 Log (99.99%) reduction*

10 minute Fungicidal Claim giving a 5 Log (99.999%) reduction*

*In the presence of 5% serum load at 20°C on hard, non-porous environmental surface



FASTER
Realistic Contact Times



CLEANER
Better Cleaning Efficiency



SAFER
Safer for Users and Occupants



RESPONSIBLE
Reduced Environmental Load

RESULT
Compliance

RESULT
Added Confidence

RESULT
Healthier

RESULT
Sustainability

BENEFIT
Disinfects a broader spectrum of organisms. Short contact times ensures user compliance.

BENEFIT
Better cleaning efficiency results in added confidence that disinfection can occur. Accel TB leaves minimal residues on the surface being cleaned.

BENEFIT
Chemicals that are safer for users and occupants provide for a healthier indoor environment

BENEFIT
Sustainable solutions contain safer ingredient choices and are better for our environment.

Made with Accelerated Hydrogen Peroxide, AHP, Accel TB is a faster, cleaner, safer and more responsible choice over other disinfectants. Disinfects a broad spectrum of organisms while short contact times ensures user compliance. AHP is the first new EPA registered disinfectant technology in 20 years. To learn more about Contec's disinfectant products, log on to our web site: www.contecinc.com.

Also available: Accel® Concentrate, effective against a broad-spectrum of pathogens in only 5 minutes. Learn more at www.contecinc.com (keyword: Accel Concentrate)



MOP HARDWARE

Visit www.contecinc.com to view our complete line of mopping products for cleanrooms and controlled environments, including:

- Edgeless® Mop
- VertiKlean® Mop
- VertiKlean® MAX™ Mop
- EasyCurve™ Mop
- EasyReach™ Cleaning Tool
- Tax-Fre® Dry Mop
- QuickConnect™ Hardware
- Stainless steel handles
- Aluminum handles
- Stainless steel buckets, carts & wringers
- Autoclavable plastic buckets, carts & wringers
- EasySat™ Bucketless Mop



Mops, Buckets and Handles
For cleaning & disinfecting ceilings, walls & floors

EasyCurve™ Mop All-Surface lightweight mop is an ideal upgrade from sponge roller and self-wringing style mops.

VertiKlean® Mop Lightweight polyester/foam disposable mop head designed for vertical surfaces. Four sizes available.

Edgeless® Mop Knitted polyester is cleanest floor mop available. Choose from traditional strand, enhanced ribbed strand or enhanced ribbed strand with textured headband



EasyCurve mop (left), Edgeless Mop (middle) and VertiKlean Mop (right) with stainless steel QuickConnect™ handles. To view our complete line of mops, handles and bucket systems, visit www.contecinc.com.



C

- CONSTIX™ Swabs** 20-21
- Cotton 22
- ESD 22
- Sealed Foam 21
- Sealed Polyester 21, 22
- Specialty 22
- Wrapped 22

D

- Disinfectants** 23
- Accelerated Hydrogen Peroxide 23
- Accel TB™ 23

M

- Mopping Systems** 12, 24
- EasyCurve™ Mop 24
- Edgeless® Mop 24
- Tax-Fre® Mop 12
- VertiKlean® Mop 24

P

- Presaturated Wipes** 3,4,7,8,14
- PROSAT®** 3, 4, 7, 8
- Knits 3, 4
 - PS-C-7030 4
 - PS-HS-7030 4
 - PS-HS9-7030 4
 - PSPS0047 4
- Nonwovens** 8
 - PS-850 8
 - PS-911 8
 - PS-919 8
 - PS-Si 8
 - PSC20002 8
 - PSC20006 8

- PROSAT® Sterile™** 3, 8
 - PS-7030IR 3, 8
 - PS-911EB 3, 8
 - PS-911EB/ETOH 3, 8
 - PSC20001 3, 8
 - PSC20005 3, 8

- Sterile PROSAT® Knits** 3, 4
 - PSPS0073 4
 - PSPS0076 4
 - PSQS0001 4
 - PSQS0005 3, 4

Pyrogens 10

Q

- QuickPick™ Packaging** 6

S

- Sidebars and Charts** 3, 5, 6, 7, 8, 9, 10, 11, 13, 15, 18, 19, 25
 - Benefits of Presaturated Wipes 8
 - Cleanroom Class Chart 25
 - Electrostatic Discharge 7
 - Foam, Types of 13
 - Hexawipe™ History 5
 - Irradiation 15
 - Knits, Types of 9
 - Lamination and Sorbency 6
 - Nonwovens, Types of 11
 - Pyrogens 10
 - Recommended Cleanroom Wipes 3
 - Sample Requests 19
 - Sterility 15
 - Woven Fabric 18
- Sterile Products** 2, 3, 4, 5, 6, 7, 8, 9, 10, 11, 12, 13, 22
- Autoclavable Swabs**
 - SV-1 22
 - SV-2 22
- VK Sponge** 19

Wipes

- DuPont™ Sontara® Nonpyrogenic Wipes 10
- Polynit 3, 9
- Polynit Heatseal 3, 6
- Polywipe-C 9
- Polywipe-C Heatseal 3, 5
- PROSAT®Sterile™ 3, 8
- Prozorb 11
- Quiltec® I 3, 6
- QuiltZorb™ 10
- Sterile PROSAT® knits 3, 4
- SterileSorb™ 15

W

Wipes 2-19

- ESD 7
 - Polynit Z 7
 - StatZorb® 7
- HexaWipe™** 5
- Laundered** 3, 4, 5, 6, 9, 10
 - Polynit 3, 9
 - Polynit Heatseal 3, 6
 - QuickPick™ Packaging 6
 - Polywipe-C 9
 - Polywipe-C Heatseal 3, 5
 - PROSAT® Knits 3, 4
 - Quiltec® I 3, 6
 - QuiltZorb™ 10
 - Sterile PROSAT® knits 4
- Nonwoven** 10-12, 15-17, 19
 - Amplitude™ Delta™ 11
 - Amplitude™ EcoCloth™ 17
 - Amplitude™ Epsilon™ 16
 - Amplitude™ Helix™ 12
 - Amplitude™ Kappa™ 11
 - Amplitude™ Omega™ 15
 - Amplitude™ Optic Wipe 16
 - Amplitude™ Prozorb 11
 - Amplitude™ Sigma™ 16
 - Amplitude™ Theta™ 17
 - Amplitude™ Zeta™ 17

- DuPont™ Sontara® Nonpyrogenic Wipes 10
- SterileSorb™ 15
- Tax-Fre® CR Tack Wipe 12
- TuffStuff™ 19
- Presaturated** 3, 4, 7, 8, 14
 - PROSAT® 3, 7, 8
 - PROSAT® Custom™ 4
 - PROSAT® Knits 3, 4
 - PROSAT®Sterile™ 3, 8
 - SATWipes® 7, 8, 14
 - Sterile PROSAT® Knits 3, 4
- Specialty** 13, 18, 19
 - EliminatR® Pillow 13
 - EliminatR® Sock 13
 - Foamtec® 13
 - FoamZorb™ 13
 - Polywipe Extra 18
 - Polywipe Light 18
 - Twill Jean 18
 - VK Sponge 19
- Sterile** 3, 4, 5, 6, 7, 8, 9, 10, 11
 - Amplitude™ Prozorb 11
 - DuPont™ Sontara® Nonpyrogenic Wipes 10
 - HexaWipe® 5
 - Polynit 9
 - Polynit Heatseal 3, 6
 - Polywipe-C 9
 - Polywipe-C Heatseal 3, 5
 - PROSAT®Sterile™ 3, 8
 - Quiltec® I 3, 6
 - QuiltZorb™ 10
 - Sterile PROSAT® knits 3, 4
 - SterileSorb™ 15

CLEANROOM CLASSES

ISO	US Standard
ISO Class 3	(Fed-Std 209E) Class 1
ISO Class 4	(Fed-Std 209E) Class 10
ISO Class 5	(Fed-Std 209E) Class 100
ISO Class 6	(Fed-Std 209E) Class 1,000
ISO Class 7	(Fed-Std 209E) Class 10,000
ISO Class 8	(Fed-Std 209E) Class 100,000

Contec®, Anticon®, PROSAT®, PROSAT® Sterile™, PROSAT® Custom™, SATWipes®, VertiKlean®, Quiltec®, HexaWipe®, Tax-Fre®, ProZorb®, Edgeless®, EliminatR®, StatZorb®, Foamtec®, CONSTIX™, FoamZorb™, TuffStuff™, QuiltZorb™, Amplitude™, EcoCloth™, Delta™, Kappa™, Helix™, Omega™, Sigma™, Epsilon™, Theta™, Zeta™, EasyCurve™, EasyReach™, EasySat™ and SterileSorb™ are trademarks or registered trademarks of Contec, Inc. The Contec logotype and logo are registered trademarks of Contec, Inc.

DuPont™ and Sontara® are trademarks or registered trademarks of E.I. du Pont de Nemours and Company.
 AccelTB® and AHP™ are trademarks or registered trademarks of Virox, Inc.
 Contec reserves the right to make corrections to this publication.
 © 2011 Contec, Inc.

Contec cleaning and disinfecting products are available throughout the world. Sales offices are conveniently located in North and South America, Europe and Asia. Visit our web site to find a sales representative in your area and to learn more about our products for critical environments.

www.contecinc.com

Presaturated Wipes

Mopping Systems

Spill Control Products

Knitted Wipes

Sterile Products

Sponges

Nonwoven Wipes

Disinfectants

Swabs



**Contec Cleanroom Technology
(Suzhou) Co., Ltd.**

17 Longyun Road
Suzhou Industrial Park
Suzhou 215026
China
Tel: +86-512-6274 4050
www.contec.asia
asia@contecinc.com

Contec Europe

ZI du Prat - RP 3707
56037 VANNES Cedex
FRANCE
+33 (0) 2 97 43 76 90

Contec, Inc.

P.O. Box 530
Spartanburg, SC 29304 USA
+1-864-503-8333
+1-800-289-5762
www.contecinc.com
wipers@contecinc.com

*Contec, Inc. is an
ISO registered company.
Visit our web site for our
current certification.*